

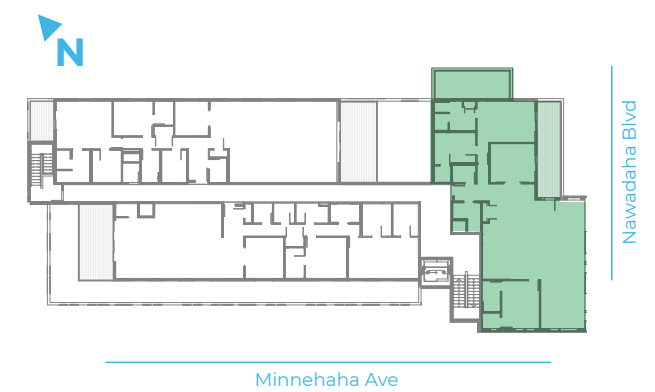
F1

FLOOR PLAN

3 BR / 3 BA / **2,177 GSF**

217 sq ft Terrace

UNIT 401



The drawings and pictures contained in any sales brochure or literature do not constitute a representation or warranty of items included in the purchase price or that the unit will conform to the drawings and pictures, or that similar views will be available from each unit.

Home Features

The largest penthouse at Portico. This plan faces south, west and east and most importantly Minnehaha Park. This flexible floor plan features two master suites, den/ third bedroom option, grand open floor plan with large public spaces and a large private deck facing Minnehaha park.

- Very glassy unit with East, South and Western exposure
- Large master bedroom
- Option for either a den or 3rd bedroom
- Largest private terrace at Portico over looking the Minnehaha Park
- Large, social kitchen that's very involved with the living space

FLOOR PLAN **F1**

PORTICO
AT THE FALLS

