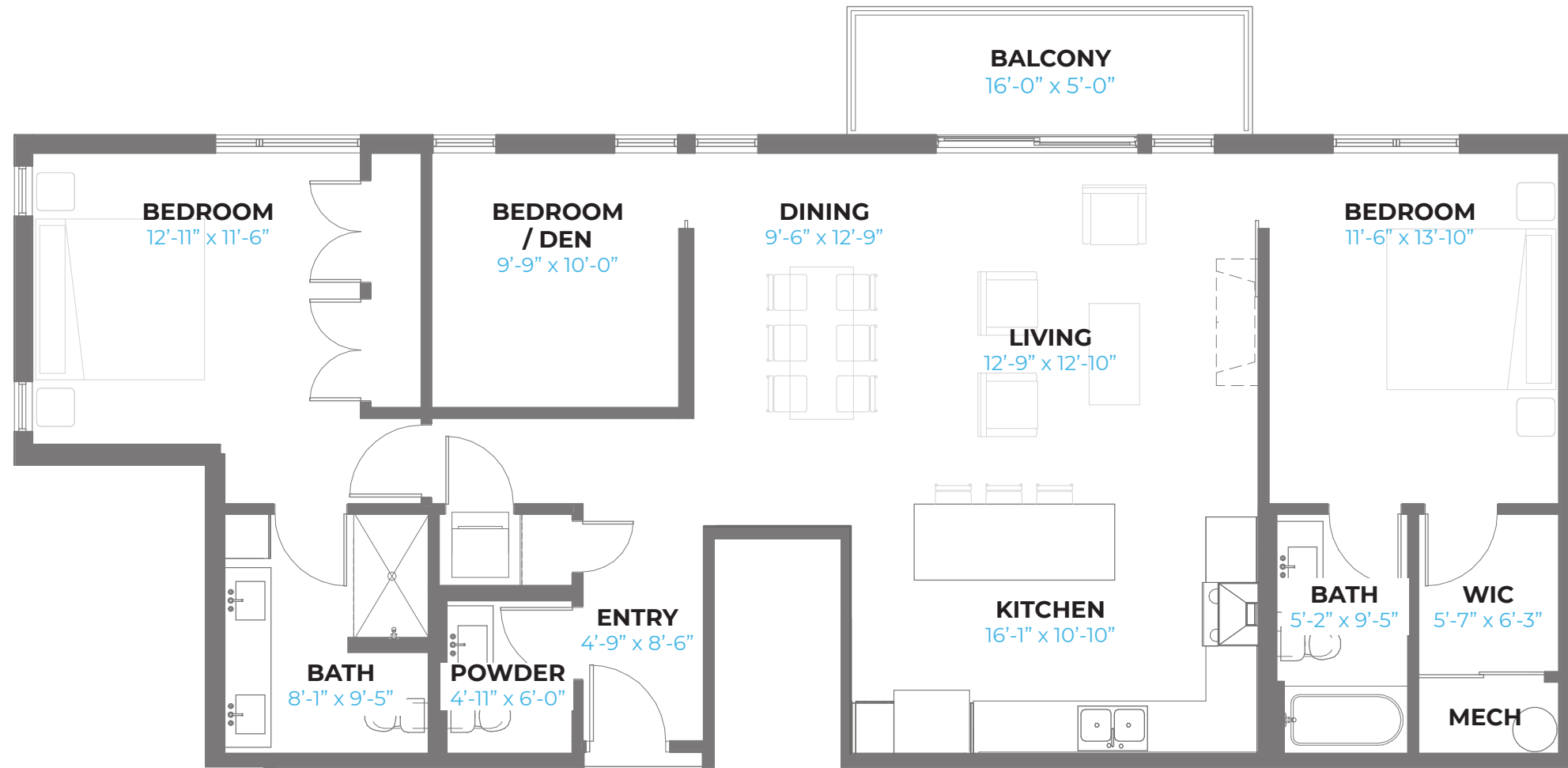
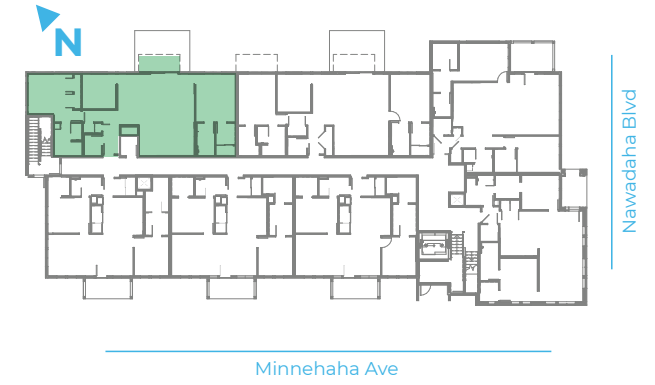


FLOOR PLAN E1

3 BR / 3 BA / **1,380 GSF**

160 sq ft Patio / 81 sq ft Balcony

UNITS 106, 306



The drawings and pictures contained in any sales brochure or literature do not constitute a representation or warranty of items included in the purchase price or that the unit will conform to the drawings and pictures, or that similar views will be available from each unit.

Home Features

Homes face east and will feature a selection of flats with balconies and two flats with large private patios and landscaped yards. A flexible floor plan can be used as a 2 bedroom + den or a 3rd bedroom. Each flat features a large kitchen, dining, living spaces, two master suites with walk-in closets, ensuite bathrooms, large windows and balcony.

Price for the **E1** plan: \$610,000

- 2 bedroom plus a den or another bedroom option
- Eastern exposure, corner unit
- 2 bedrooms with ensuite baths and walk-in closets. 3rd powder room bath for guests.
- LOTS of glass; light will cast all the way into the unit because it's a bit narrower
- Very large balcony
- Great social kitchen that's very involved with the living spaces
- Large island for gathering/entertaining
- Buyers can choose den option or a large walk in closet for the master bedroom

FLOOR PLAN **E1**

PORTICO
AT THE FALLS

