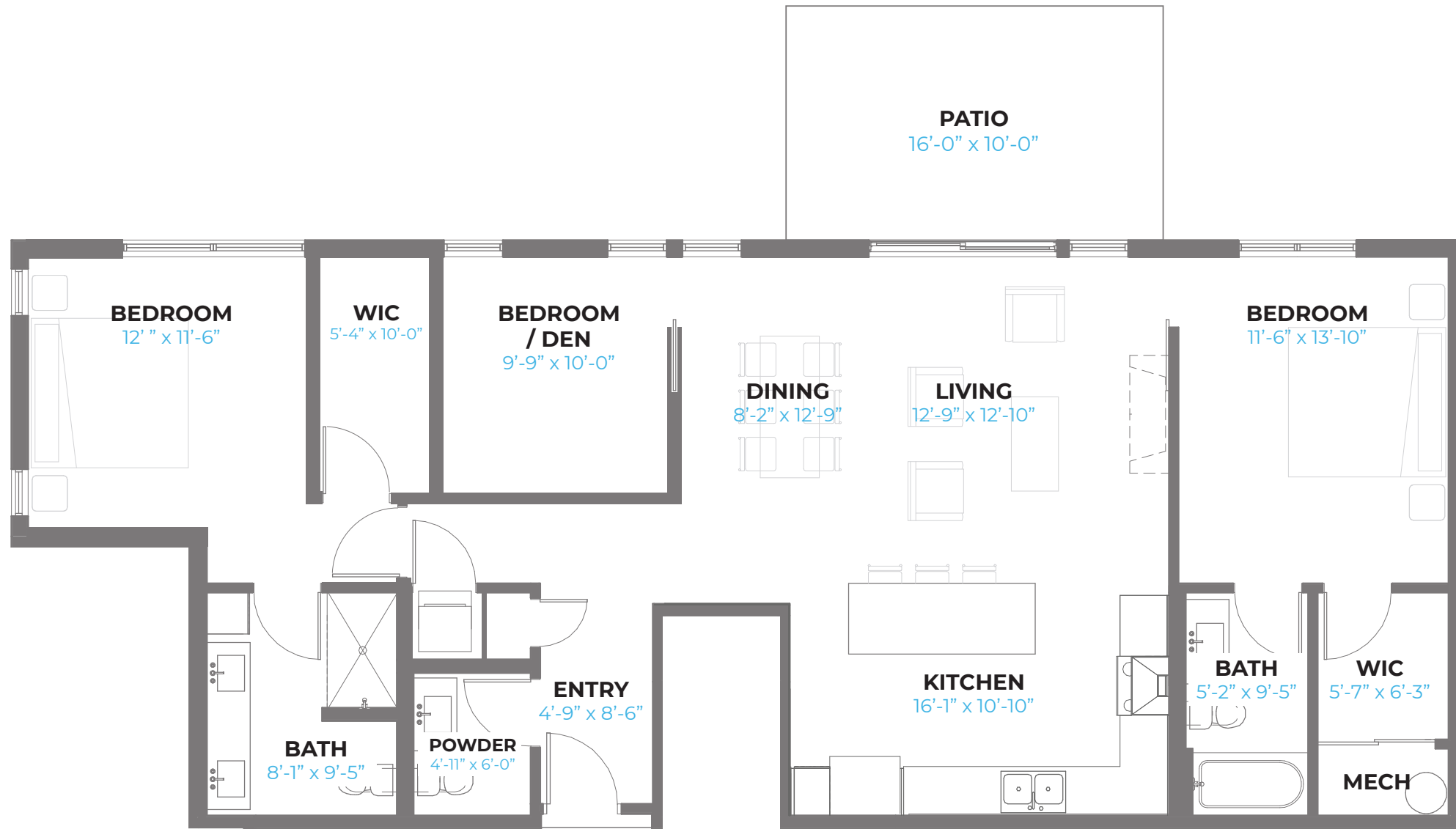
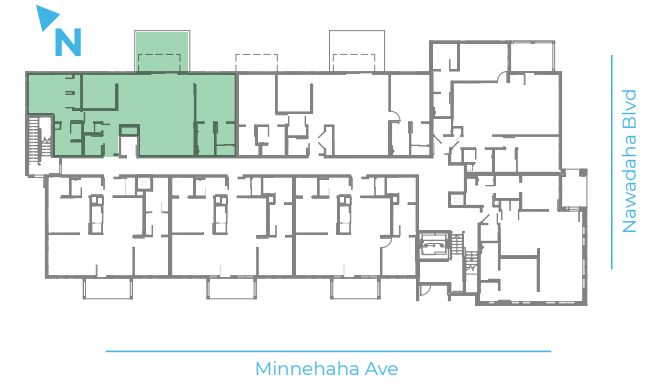


# FLOOR PLAN E1

3 BR / 3 BA / **1,380 GSF**  
160 sq ft Patio

UNITS 106



The drawings and pictures contained in any sales brochure or literature do not constitute a representation or warranty of items included in the purchase price or that the unit will conform to the drawings and pictures, or that similar views will be available from each unit.

## Home Features

Home faces east and feature a large private patio and landscaped yards. The flexible floor plan can be used as a 2 bedroom + den or a 3rd bedroom. Flat features a large kitchen, dining, living spaces, two master suites with walk-in closets, ensuite bathrooms, large windows and balcony.

- 2 bedroom plus a den or another bedroom option
- Eastern exposure, corner unit
- 2 bedrooms with ensuite baths and walk-in closets. Third powder room for guests.
- LOTS of glass; light will cast all the way into the unit because it's a bit narrower
- Very large patio
- Great social kitchen that's very involved with the living spaces
- Large island for gathering/entertaining

FLOOR PLAN E<sup>1</sup>

PORTICO

AT THE FALLS

